

FIGURE S1. Empirical distributions, median and tolerance intervals for quantitative standardized traits. Grey violin plots represent truncated kernel density estimates, i.e., the lower and upper boundaries of a violin plot are empirical min. and max., respectively. White circles stand for sample median. Black bars represent nonparametric tolerance intervals covering at least 80% of the population with 90% confidence. Trait symbols are the same as in Fig. 6 and in the text.

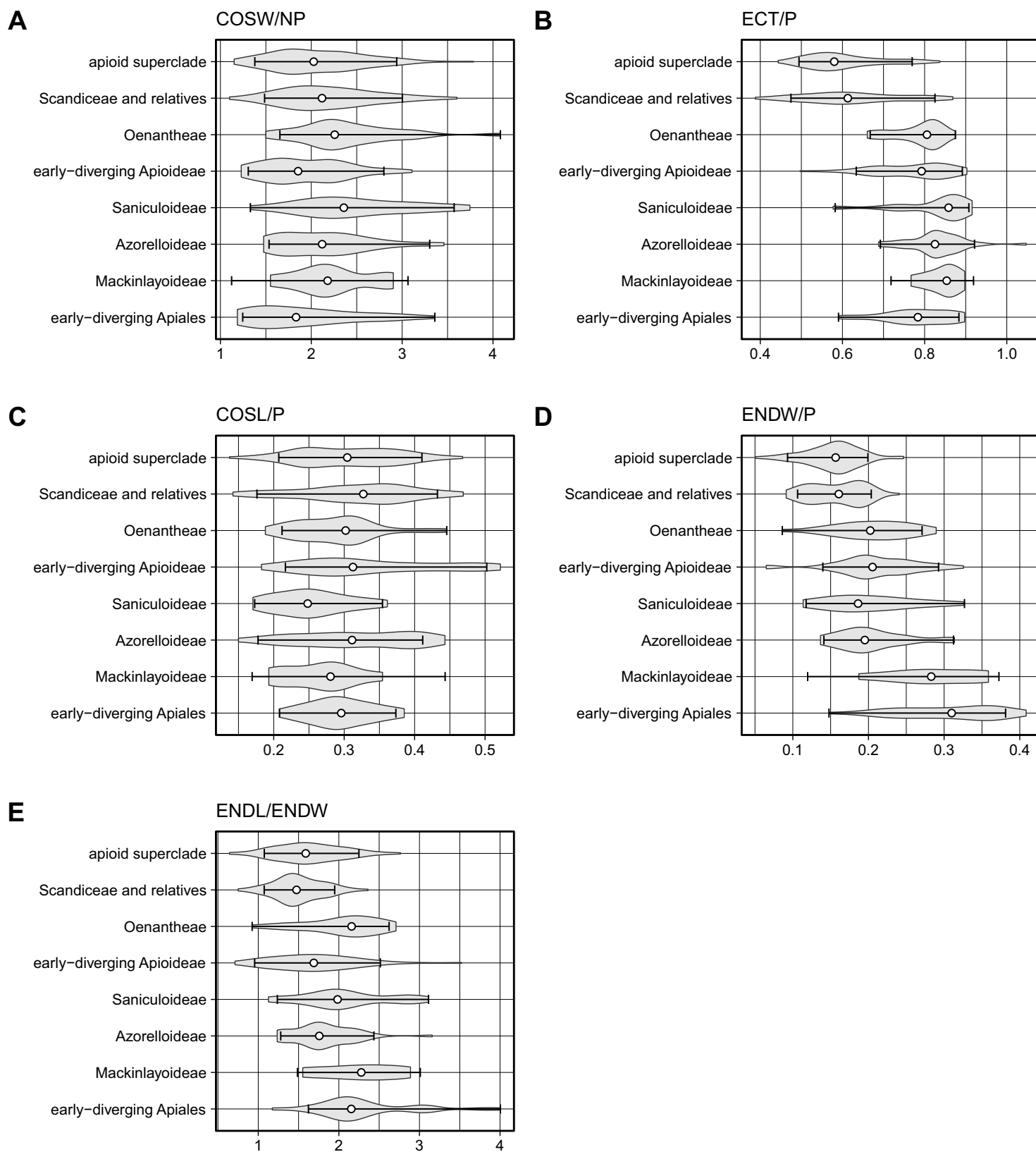


FIGURE S2. Empirical distributions, median and tolerance intervals for quantitative standardized traits. For details, see caption to Fig. S1.

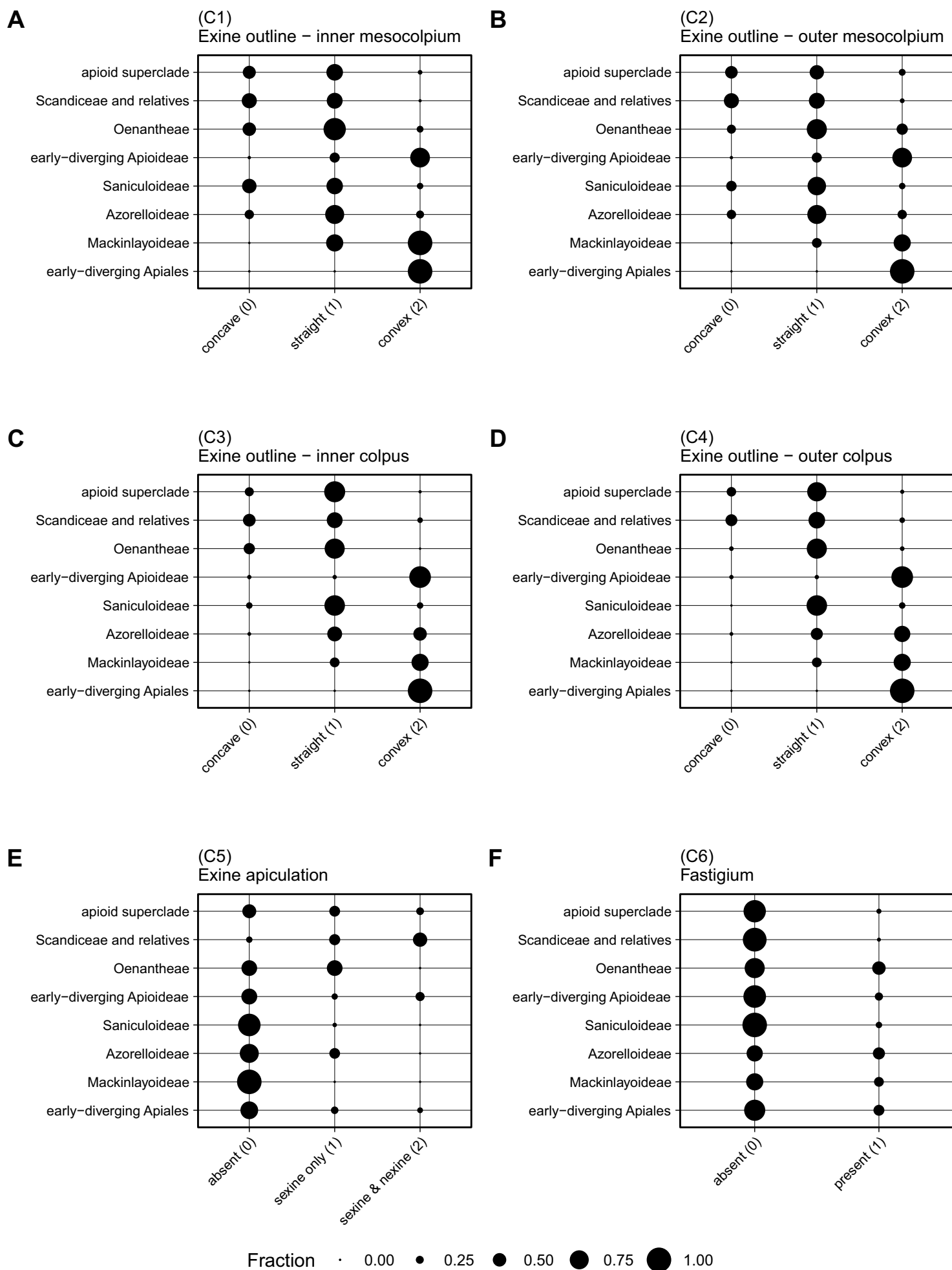


FIGURE S3. Empirical distributions of qualitative traits. For a given taxon and trait, the radius of each circle is proportional to the fraction of species having given state of the trait. A sum of the fractions larger than unity indicate the presence of polymorphic species within a given taxon.

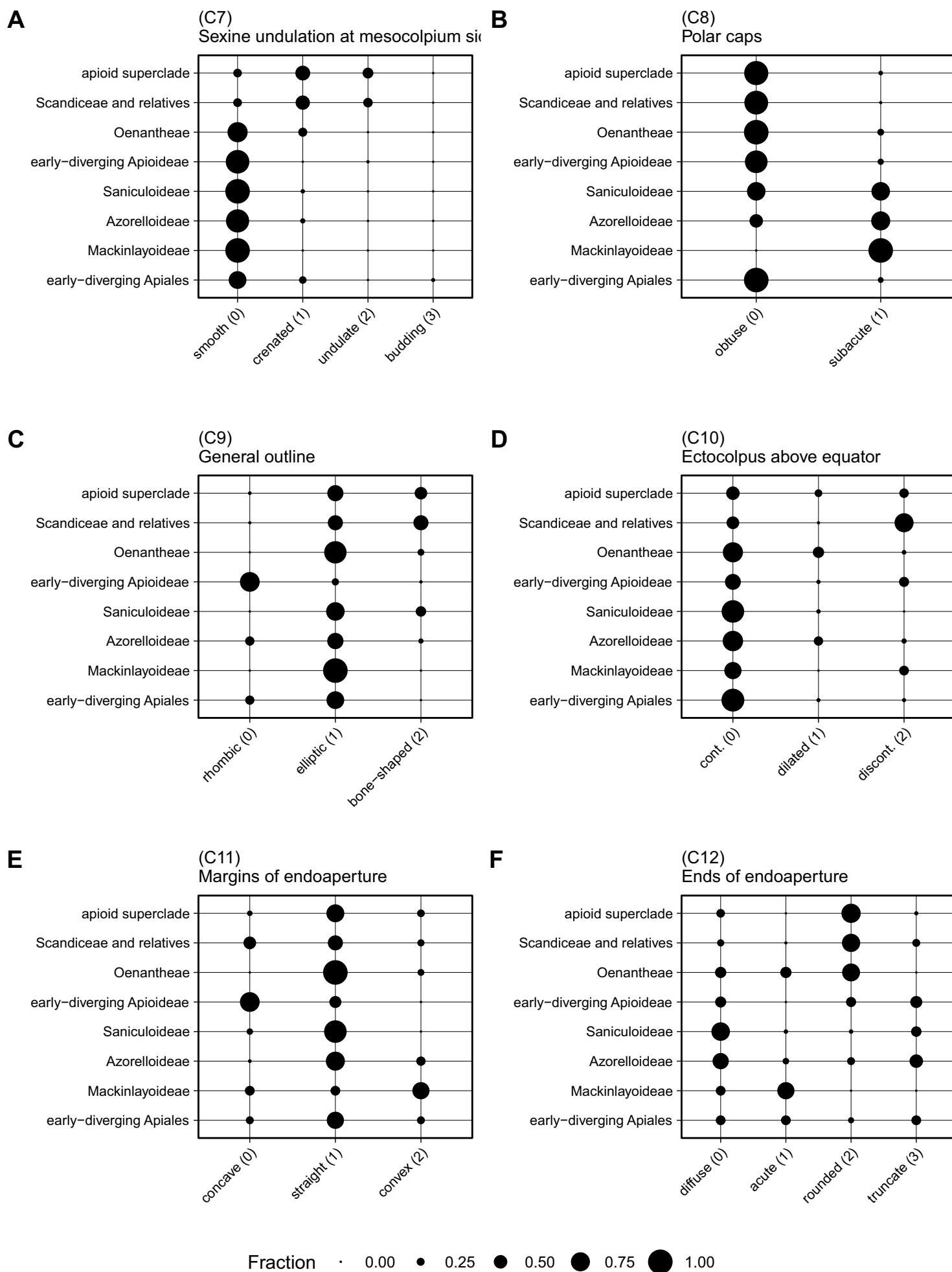


FIGURE S4 Empirical distributions of qualitative traits. For details, see caption to Fig. S3.

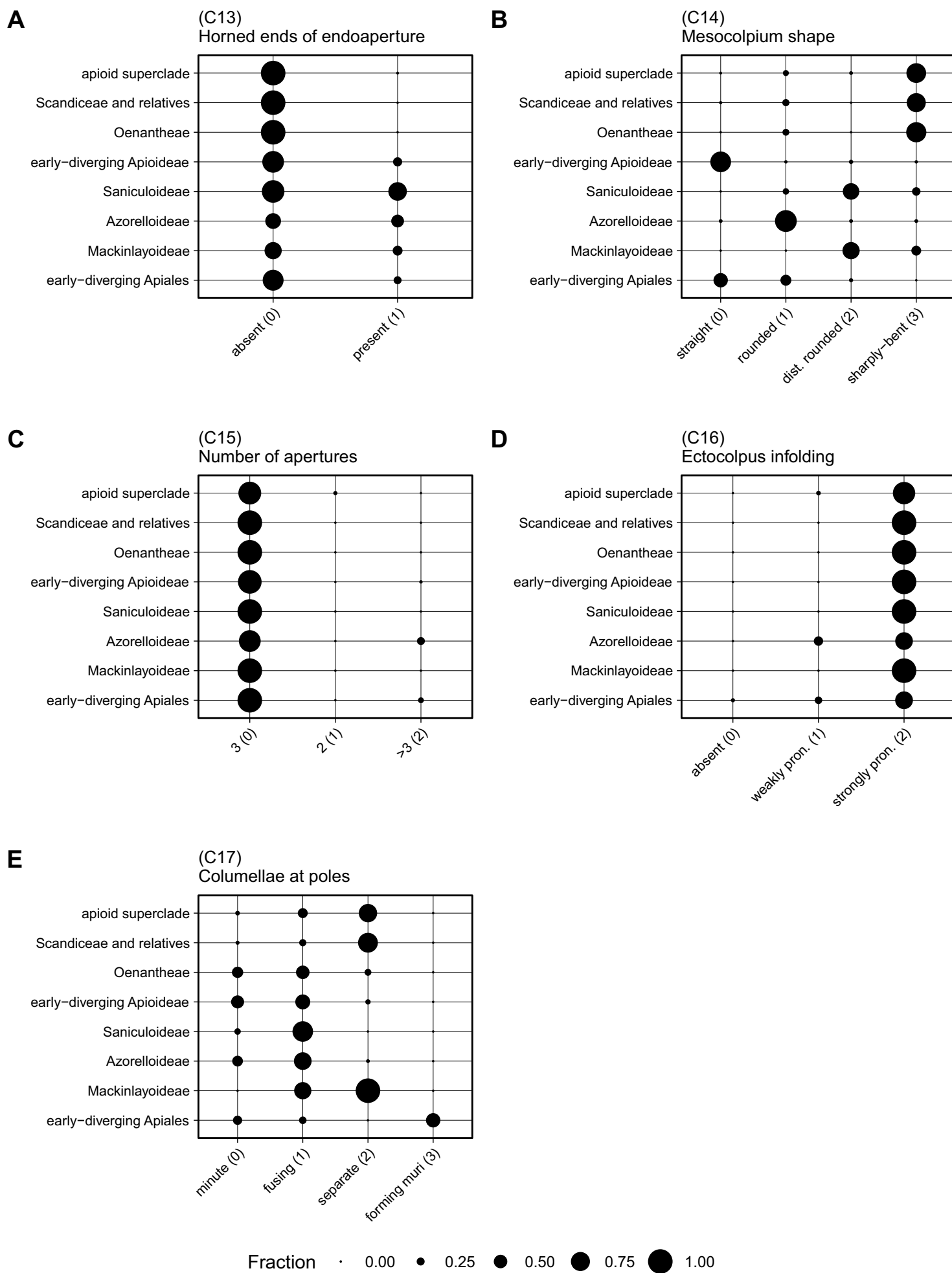


FIGURE S5. Empirical distributions of qualitative traits. For details, see caption to Fig. S3.